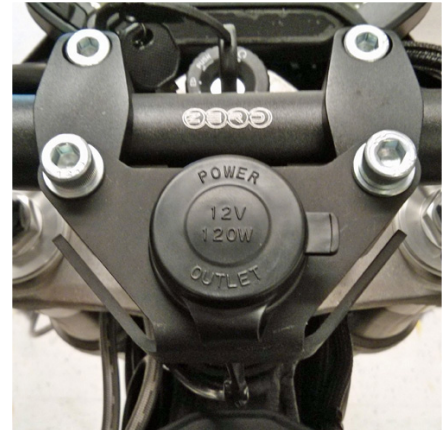


## Overview

Charge a GPS, smart phone or mp3 player using Zero Motorcycles' 12V Accessory Socket Kit. Designed to connect directly to your motorcycle's power harness, the accessory socket enables you to charge small electronic devices that have a cigarette lighter plug or can be connected via an adapter. The accessory outlet is rated up to 10 amps/120 watts.

This kit was designed for use with the Zero FX(S) and includes the necessary mounting hardware for installation.



## Operating Instructions

The 12V Accessory Socket accepts any standard cigarette lighter plug or adapter. For those customers with electronic devices powered by USB, a simple cigarette lighter to USB adapter (not included) can be used. Simply insert the plug or adapter into the socket. The socket is powered only when the motorcycle is powered on. A charging indicator on the connected electric device will let you know that the socket is functioning correctly.

Since the accessory power port of your Zero motorcycle is limited to 10 amps at 12 volts, the total power consumption of all electrical accessories should not exceed 120 watts.

**WARNING: TO AVOID ELECTRICAL SHOCK, DO NOT INSERT FINGERS OR OTHER BODY PARTS INTO THE OUTLET SOCKET. METAL OBJECTS SHOULD ALSO NOT BE INSERTED TO AVOID DAMAGE TO THE OUTLET SOCKET.**

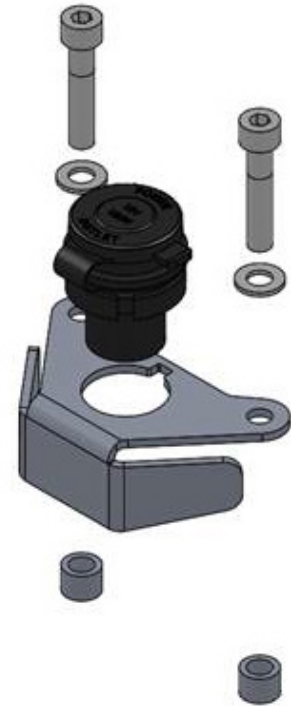
## Installation Instructions

### TOOLS REQUIRED:

- Allen Key - 6 mm
- Socket - 13 mm
- Ratchet

### INCLUDED PARTS:

PART NUMBER	QTY	PART NAME
26-08020	1	XMX 12V Accessory Bracket
26-08021	2	XMX 12V Accessory Spacer
45-04061	1	12V Accessory Socket
90-02098	2	Hexagon Socket Head Cap Screw M8 x 40mm



### INSTALLATION:

1. Unscrew and remove nut from the back of the 12V accessory outlet.



Figure 1. 12V Accessory Socket w/ nut

2. Insert the 12V accessory outlet into the hole on the XMX 12V Accessory Bracket. Replace the nut on the 12V accessory outlet and secure the outlet into place by tightening it.

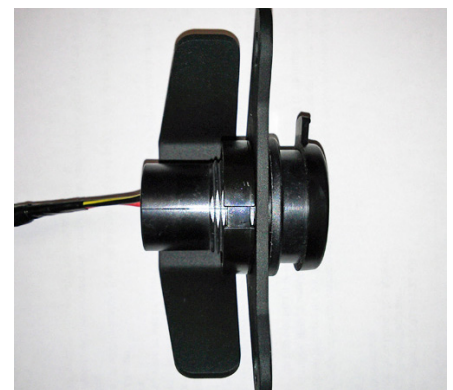


Figure 2. Socket secured to bracket

3. Before the next step, take a picture of the orientation of the Zero FX handlebars and/or have a partner support them. You'll want to be able to return them to the original position if they rotate.

Using the 6 mm Allen key, remove the hexagon socket cap screw from the driver-left side handlebar clamp. Replace with the M8 x 40 mm hexagon socket cap screw supplied with this accessory. The XMX 12V Accessory Spacer is placed between the bracket and the handlebar clamp. The M8 Washer goes between the cap of the screw and the bracket. See Figure 3.

Repeat the same procedure with the driver-right hexagon socket cap screw.

With the bracket in place and the handlebars properly positioned, torque the hexagon socket cap screws to 19 ft-lbs.

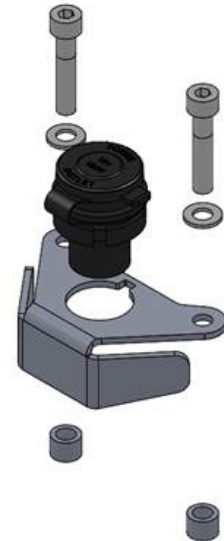


Figure 3. Screw, washer, bracket and spacer

4. Remove the seat bolts using a 13 mm socket and a ratchet. Remove the seat.
5. Using a 3 mm Allen key, unscrew the four (4) black M5x16 screws and washers along the top of the plastic panel and then the additional screw and washer on the bottom right of the panel. Remove the push rivet on the top right edge of the panel. The push rivet is removed by pressing the center of the rivet with a 3mm allen key or similar metal implement. Detach the driver-right side of the plastic tank assembly.
6. Locate the Sumitomo accessory power port inlet under the front portion of the tank. Remove the black plastic protective cover.
7. Route the cord from the back of the 12V accessory outlet down around the right side of head tube and plug into the Sumitomo inlet. Ensure that the Sumitomo connectors snap securely together.



Figure 4. Proper routing of outlet cord

8. Rotate handle bars from left to right to ensure that they move freely and that the accessory outlet cable does not restrict handlebar movement and does not become too taught.
9. Replace the driver-right side plastic panel by replacing the five (5) black M5x16 screws and washers and replacing the push rivet. Torque the screws to 1 ft-lb.
10. Replace the seat and re-attach with the seat bolts. Torque to 11 ft-lbs.
11. Test the operation of the 12V Accessory Outlet by plugging in an electrical device that has a cigarette plug or adapter. Be sure that the motorcycle is powered on with the key in the on position. The accessory outlet only provides